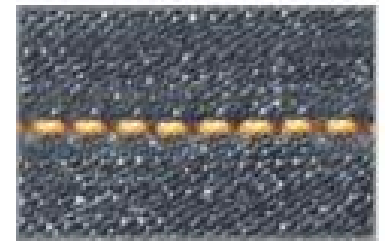
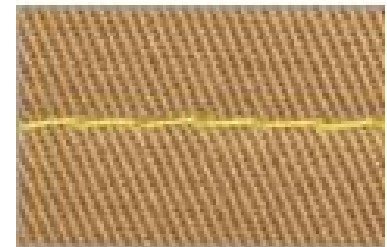
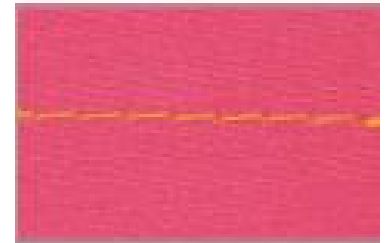


# JK200-D4

Four automatic lockstitch sewing machine

# JOCKY



## Features

1. Unique appearance design, bigger operating space and easier sewing;
2. Lifting the shaft and the back cover to reduce wear and increase the service life of the machine;
3. The fuselage is heavier and thicker, making the machine more stable and less sound;
4. Optional 3 automatic, 4 automatic lifting foot function;
5. For medium heavy and heavy material, the needle distance can reach up to 7mm.

# MORE INFORMATION

## Technical Specification

Model	JK200-D4	JK200-D4H
Needle quantity	1	1
Hook	Small	Big
Needle size	DBx1 7-16#	DPx5 18-24#
Stitch length	0-5mm	0-7mm
Max. speed	5,000sti/min	5,000sti/min
Height of presser foot	6-12mm	6-12mm
Lubrication	Automatic	Automatic
Packing size	625x245x540mm	625x245x540mm
Weight(G.W/N.W)	38/31kgs	38/31kgs